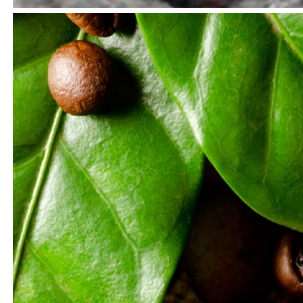
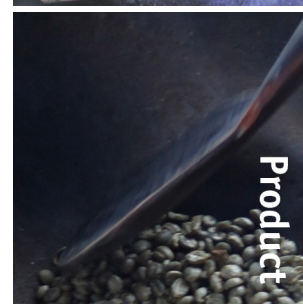


Virtu 92|36 [a] CoEx® bean2cup 3 Coffee's



Key features

- CoEx® brewer & 2 whole bean grinders
- Three coffee variations
- 10.4" full color touch screen
- User friendly interface
- Outlet indications
- Cup sensor
- Jug facility

Options

- Front branding
- On-screen communication options
- Connect.Me® (Online monitoring)
- Double cupstand
- Base cabinet with condiment tray's
- Enlarged bean canisters
- Waste guide

Virtu 92|36 [a] CoEx® bean2cup 3 Coffee's



Dimensions

	inch	
Machine	h*	34.3
	w	16.9
	d	21.1
Base Cabinet	h	33.5
	w	16.9
	d	21.1
Weight	120 lb	

Specifications

- MoVeC-ICEq® & USB upload
- 10,4" full color touch screen
- User Interface : AB/Scope
- Menu structure for selections
- Direct start optional
- Multiple languages possible
- Cup-sensor
- Strength selections menu's
- Number selections
- Connection for payment systems [MDB]
- Boiler : 1x 0.4L, + 1x 5L

Connections

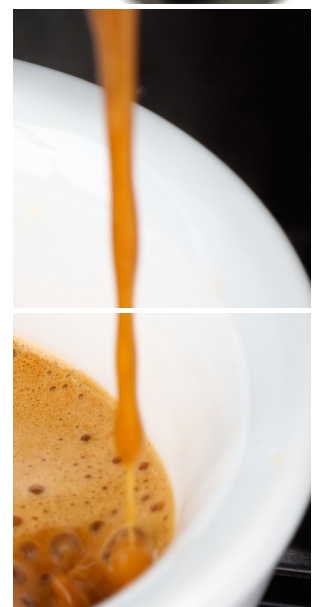
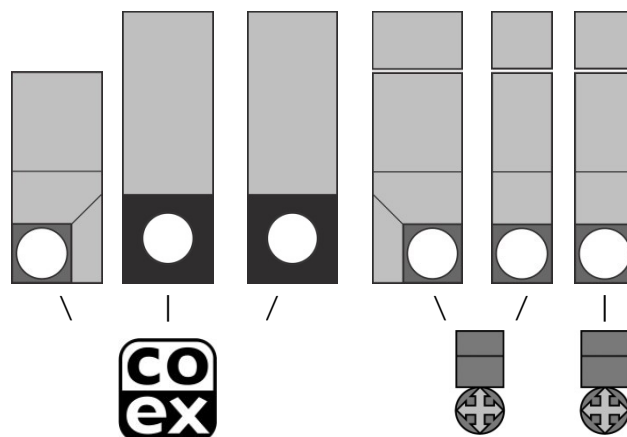
- 100-120 Volt AC
- 50/60 Hz
- 1200 Watt
- 10-16 Amp
- ¾" BSP [15 mm] mains
- waterfilter & waterlock recommended
- USB
- LAN or Wifi

Selections

Whole Bean Coffee I	Hot Chocolate
Whole Bean Coffee II	Chocomilk
Espresso I	Espresschoc
Double Espresso I	Cappuccino I
Espresso II	Cappuccino II
Double Espresso II	Decaf Cappuccino
Decaf Coffee	Decaf Espresso
Jug selections	French Vanilla
Customized recipes **	Hot water

** optional, ask for details & conditions

Canisters



Capacities

	#	Size	lbs	Cups
Whole Bean Coffee I	1	BC	2.43	150
Whole Bean Coffee II	2	BC	2.43	150
Chocolate	3	90E	5.73	130
Milktopping	4	60E	2.43	180
French Vanilla	5	60E	3.64	80
Decaf Coffee	6	90	1.9	125

Waste bucket ≥ 210
 (# cups may vary depending on settings)